

Voith Water Tractor „BERNE“

2,176 bhp, 30.5 mt bollard pull, fire fighting



MAIN CHARACTERISTICS

Length	28.59 m
Beam	8.80 m
Draft	abt. 4.50 m
Speed	up to 12 kn
Classification	GL + 100A5 K E Tug
Measurement	229 GT / 68 NT
Flag	German
Call Sign	DD0B
Homeport	Bremen
Built	1985
Fuel Capacity	abt. 64.8 m ³

DECK EQUIPMENT

Towing winch
Mooring/linehandling winch
Towing hook
Deck crane

ENGINE ROOM

Two Diesel engines, 800 kW at 900 rpm each
Two Gen-Sets, 53 kVA each

GENERAL

The tug is fully equipped for harbour assistance and salvage operations.

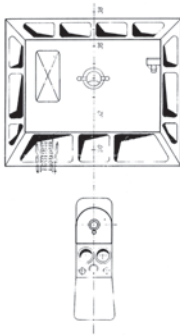
Two fifi-guns, 1 x 23.50 m above WL, 1 x 8.50 m above WL
total 600 m³/h water and foam.



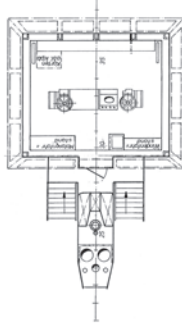
Unterweser Reederei GmbH

Am Weser-Terminal 10 · D-28217 Bremen
Phone +49 (421) 3488-0 · Fax +49 (421) 3488-100
info@urag.de · www.urag.de

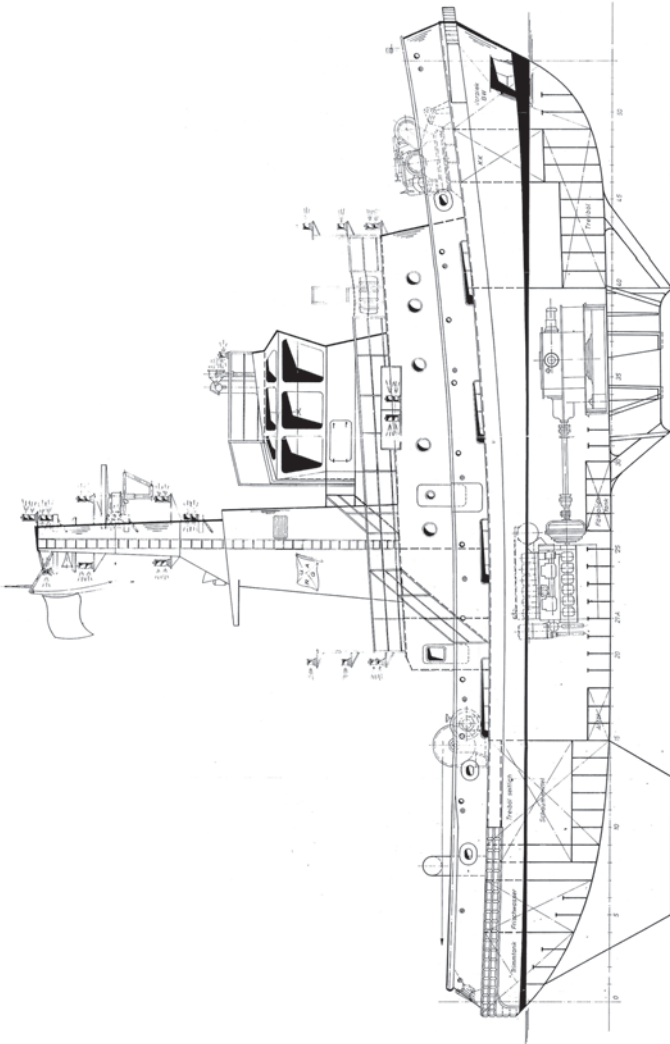
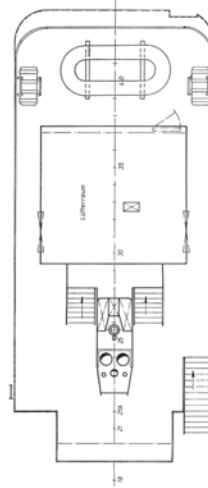
Peildeck



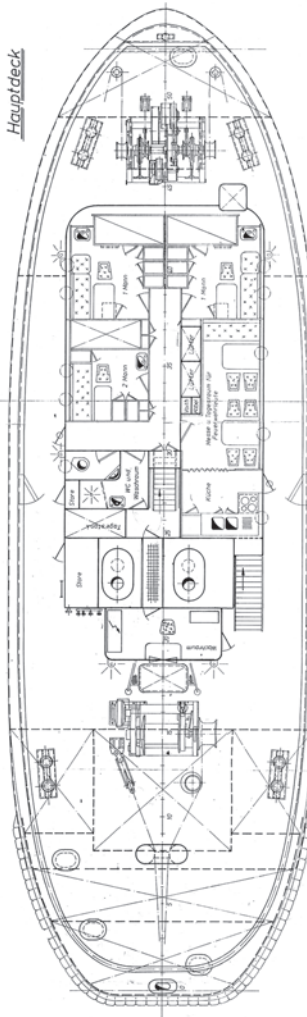
Steuerhaus



Brückendeck



Hauptdeck



Raumplan

